

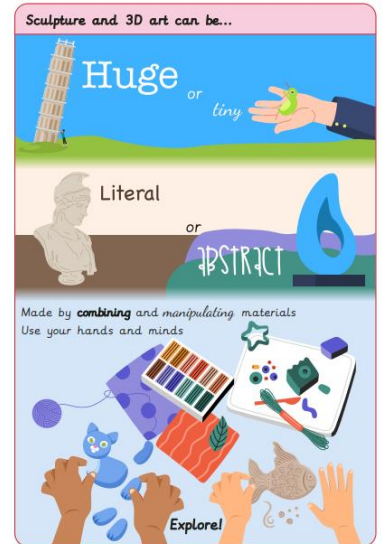
# Knowledge organiser – Y6 SCULPTURE



## My Key Learning



Joseph Cornell was an American visual artist. He also made films. He used discarded artefacts to create his art. These are also called found objects. He pioneered assemblage.

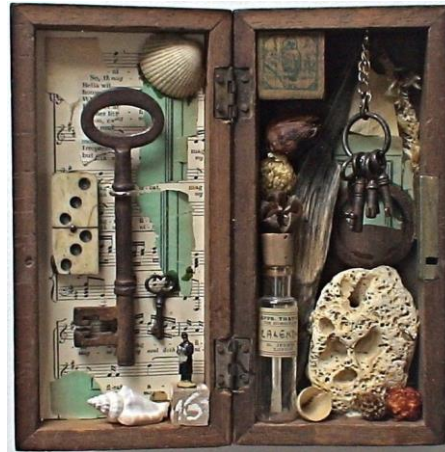


### What do I already know?

Installation art is art that is placed in a space to convey a message (concept).

**Found objects**

Materials not usually thought of as art materials can be used to make sculptures, e.g. scrap metal, old toys, pieces of furniture.



### Sculpture can be...

Relief is a form of sculpture that builds out from a flat shape.

Make multiple copies of the same shape, which can be different sizes.

These shapes and images can be overlapped.

### Memory jugs



- Memory jugs are a type of folk art. (Art that comes from a cultural or community tradition.)
- A memory jug could be any type of container, but was usually a jug or vase.
- It is believed they were created to commemorate a person after they died.
- The surface was covered with shells, coins, buttons, jewellery and other small objects.

Key Vocabulary	Definition
<b>assemblage</b>	3D collage of collected or made items
<b>composition</b>	putting different elements together in a pleasing way
<b>juxtaposition</b>	put objects close together or side by side
<b>literal</b>	represented exactly as it is
<b>manipulate</b>	changing materials by handling or using tools
<b>memory</b>	something from the past
<b>relief</b>	art work that projects from a solid base; coming out of the page
<b>tradition</b>	a custom or belief passed on

