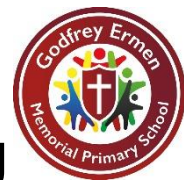
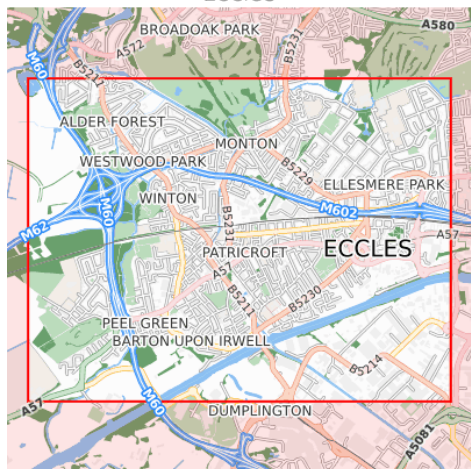


# Knowledge organiser Y2 LOCAL GEOG

## My Key Learning



Map showing the extent of Eccles



Contains OS data © Crown copyright and database right 2021

### Our area

Our school is on School Road, and is quite near to Liverpool Road, The Bridgewater Canal, and The Manchester Ship Canal



It's really important to be able to give directions and follow maps so that we do not get lost!

### What do I already know?

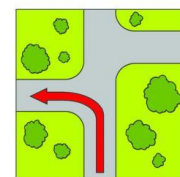
That we live, work and enjoy ourselves in Peel Green, Patricroft

How to create a simple map from a bird's eye view

Some words and meanings to do with weather; sun, wind, rain, snow

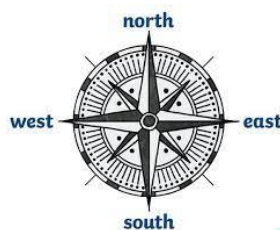
How to follow a simple map

Our surroundings are either natural (made by the planet) or man-made



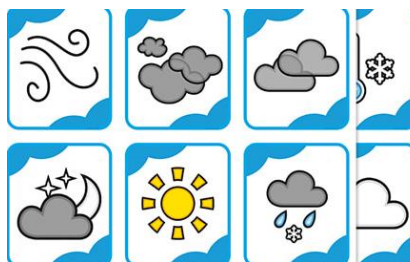
| Key Vocabulary         | Definition   |
|------------------------|--|
| <b>Thermometer</b>     | A piece of equipment used to measure temperature             |
| <b>Temperature</b>     | A picture used to show something much larger                 |
| <b>Landmark</b>        | A building or special place which we can recognise           |
| <b>OS map</b>          | A detailed map of our local area which uses symbols          |
| <b>Rain gauge</b>      | A device used to measure the amount of rain which has fallen |
| <b>Compass</b>         | A device which shows us which direction we are pointing in   |
| <b>Natural feature</b> | A landmark or thing which has been made by the planet        |
| <b>Man made</b>        | A landmark or thing which has been made by people            |

### Giving directions



Using a 4 point compass, it is possible to follow simple directions and find places easily

### Understanding and recognising the weather



We can predict the weather by understanding what it has been like in the past

